

## LP5F



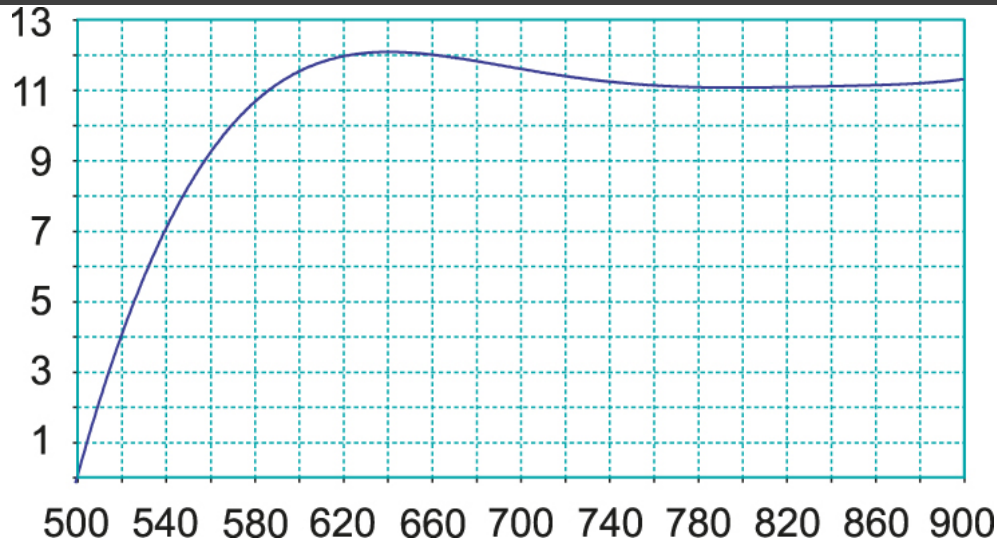
Log-periodic pre-assembled aerials for **V band** characterized by extremely easy connection due to the **F connector** being located near the mast clamp.

- Due to the specific mast clamp these aerials can be assembled in **vertical or horizontal polarisation without additional accessories.**
- Black plastic parts.

CODE		216108
Elements	no.	14+14
Band		5
Channel		E38-E69
Bandwidth	MHz	606-862
Gain	dBi	12
Front/Back ratio	dB	36
Return loss	dB	-15
Beamwidth (-3dB)	°	±25
Wind load at 120km/h (720N/m <sup>2</sup> )	kg (N)	3.0 (29.43)
Connector	Type	F
Impedance	Ω	75
Max mast (Ø)	mm	60
Dimensions (L x H)	cm	99 x 24
Quantity Masterbox	pcs	20
Unit weight	kg	0.767
Total weight	kg	15.84

**Accessories**

GAIN



PATTERN

