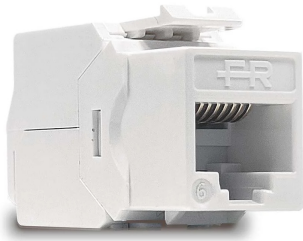


CAT6 Keystone

RJ45 connectors



Keystone RJ-45 CAT 6 UTP receptacle for high-density installation solutions suitable for **Gigabit ethernet** data distributions. Quick and easy connection **without the use of tools** ensuring significant time savings during installation.

Technical Chars

- RJ45 CAT 6 UTP Class E Plug
- Tool-free mounting
- Supports **TIA 568 A and B** configurations
- Also suitable for **patch panel** installations
- Compatible with cables **from AWG23 to AWG26**
- ATM 1200
- 1000BASE-T (Gigabit Ethernet)
- 1G FCBASE-T

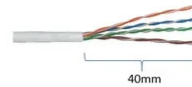
CAT6 Keystone		
Code		287706
Connector		Keystone RJ45 CAT 6 UTP
Colour		White
Contacts		Golden bronze over nickel
Insulation material		UL 94 V-0 class flame retardant plastic material
Total mating force		> 100g (800g on 8 conductors)
Insertion-extraction life		> 750
Max. speed		ATM 1200; 1000BASE-T (Gigabit Ethernet); 1G FCBASE-T
Dielectric withstanding voltage		1000 Vdc for 1 min
DC pass	A	1.5
Contact resistance	mOhm	10
Insulation resistance	MOhm	500
Impedence	Ohm	< 0.1
Conformity		Class E, ANSI/TIA 568-B.2-1, ISO/IEC 11801, ISO/IEC 60603-7, YD/T 926.3-2009
Operating temperature	°C	-10 to +60
Storage temperature	°C	-40 to +70
Humidity	%	10% - 90% RH

Dimensions and packaging

Pieces	50
EAN code	8016978107537

Tagliare la guaina esterna del cavo per circa 40mm, dividendo le coppie di conduttori

Strip of 40mm of cable jacket then untwist the conductor pairs.



Inserire il cavo nel coperchio di terminazione e disporre i conduttori nelle apposite cavità seguendo la codifica colore.

Insert the cable into the termination cap, fan out the conductors in the proper connection slots accordingly colour code.



Agganciare il coperchio alla presa seguendo le indicazioni delle frecce sulle parti in plastica.

Install the termination cap to the jack following the arrows.



Premere fino in fondo il coperchio di terminazione

Push the termination cap completely.



Chiudere le alette di terminazione ed applicare la fascetta in dotazione.

Close the jack termination wings and fast the cable tie.

