

FRACARRO

ONTG-8GP-M

ONT 8 POE PORTS 287794



Packing list:

- ONT X 1 • L-shaped bracket X 2 • Power cord X 1 • Screws X 6
- Quick Installation Guide X 1

QUICK INSTALLATION GUIDE



SAFETY WARNING

The product must only be installed by qualified persons, according to the local safety standards and regulations. Fracarro Radioindustrie is free from all civil and criminal responsibilities due to breaches of the current legislation derived from the improper use of the product by the installer, user or third parties. The product must be used in full compliance with the instructions given in this manual in order to protect the operator against all possible injuries and the product from being damaged. Do not open the product container, dangerous voltage parts can be accessible when opening the packaging.

Installation warnings

- The product must not be exposed to any dripping or splashing and thus it should be installed indoors and in a dry location.
- Humidity and condensation could damage the product. In case of condensation, wait until the product is dry before using it.
- Handle the product carefully. Impacts can damage the product.
- Leave enough space around the product to ensure sufficient ventilation.
- Excessive temperatures and/or an overheating may affect the performance and the life of the product.
- Don't install the product above or near any heat sources, in dusty places or where it might come into contact with corrosive substances.
- For "PERMANENTLY INSTALLED APPLIANCES", an easily accessible cutting device must be added to the exterior of the appliance; for "APPLIANCES WITH A POWER PLUG", the socket must be installed close to the appliance and easily accessible.
- Never look into the optical connectors of the product. Laser radiation is not visible to the naked eye and therefore long-term damage cannot be prevented. When working with the optical connectors of the splitter, always check that the lasers of any optical transmitters connected to it are turned off.



Protective Earth (ground) symbol



ATTENTION: Invisible laser radiation
Don't look directly
Class 1M laser product

General warnings

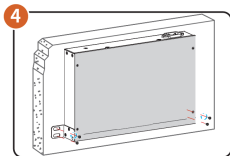
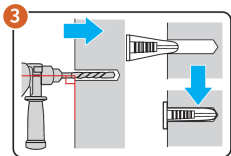
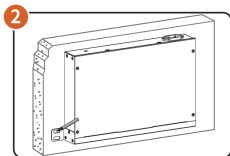
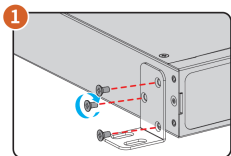
In the event of a malfunctioning, do not try to fix the product as the guarantee would be invalidated. Use only the power adapter supplied with the product.

Although the information given in this manual has been prepared carefully and thoughtfully, Fracarro Radioindustrie S.r.l. reserves the right to modify it without notice and to improve and/or modify the product described in this manual. See the website www.fracarro.com to have information relevant to the technical support and product guarantee.

1. INSTALLATION

- **Installation to the wall**

1. Use the screws in the box to fix the two L-shaped brackets to the two sides of the ONT.
2. Put the ONT port on the wall horizontally, mark the position of the screw hole of the L-shaped bracket with a marker pen, then drill a hole at the marked position with a percussion drill, and then drive the expansion coil (self-provided) into the drilled hole on the wall.
3. Use a screwdriver to screw the screw (need to be prepared) that has passed through the ONT L-shaped bracket into the expansion tube to ensure that the ONT is firmly installed on the wall.



2 DEVICE CONNECTION

The indicator lights of the ONT are described as follows:

Indicator		Describe
PWR	Power indicator	On: The power supply to the device is normal Off: The power supply to the device is abnormal
PON	PON Link indicator	On: The optical link has been established Off: Discovery and registration not completed
SYS	System indicator	Blinking: The device has been started Off: The device is not running or is starting
LOS	Light signal indicator	On: No optical signal input or abnormal optical signal input Off: Optical signal input is normal
LAN	Network port connection indicator	On (Blue) : The network port has been connected Blinking: Data is being transmitted on the network port Off : The network port is not connected
POE+LAN	POE+LAN indicator	On (Cyan) : Port has been connected and POE is working Blinking: Data is being transmitted on the network port Off: The network port is not connected

Notice:

Do NOT install the ONT with air vents facing downward otherwise, there will be potential safety hazards.

2.1 Connect the RJ45 port

Use a network cable to connect the Ethernet interface of the ONT to the peer device.

2.2 Connect the PON port

1. Remove the dustproof cap from the fiber optic connector and the PON port of the ONT.
2. Align the fiber optic connector with the PON port and insert it slowly.

Notice:

- When the fiber is not connected, be sure to cover the PON port of the ONT and the dust cap of the fiber.
- Please don't look directly at the PON port, and don't look directly at the laser beam inside the fiber, otherwise it may damage your eyes.
- Do not bend the fiber excessively.

2.3 Connect the Console port

Connect to the console port to log in to the ONT, and manage the ONT through the command line.

1. Connect the RJ45 end of the serial cable to the ONT Console port.
2. Connect the serial end of the serial cable to the serial port of the peer device.

2.4 Connect the ground wire

The correct connection of the ground wire is an important guarantee for the equipment to protect against lightning and electromagnetic interference.

1. Connect one end of the ground wire to the ground terminal of the ONT.
2. Connect the other end of the ground wire to the terminal of the ground bar.

2.5 Connect the power cord

The ONT is connected to an AC power supply of 100-40V~50/60Hz.

1. Check that the selected power supply is consistent with the power requirements marked on the ONT.
2. Connect the power cord to the ONT and the power outlet.

3. DEVICE MANAGEMENT

3.1 Local login

To ensure that the computer can normally log in locally through the ONT Console port, a terminal emulation program must be run on the computer.

1. Use a serial cable to connect the Console port of the ONT to the serial port of the computer
2. Open the computer's terminal emulation program (such as Putty), and configure the following parameters:
 - Baud rate: 115200
 - Data bits: 8 bits
 - Parity check: no
 - Stop bit: 1 bit
 - Data flow control: no
3. Press the Enter key, and enter the ONT user name and password (both are admin by default) in the displayed page to successfully enter the ONT command line interface.

4. FAQ

Common fault	Troubleshooting
PWR indicator LEDs are OFF	<p>Please check the power supply:</p> <ul style="list-style-type: none"> ●Check whether the power connection cable is connected well with the outlet. ●Check whether the power button is On. ●Check whether the voltage is normal.
LOS LED light	<ul style="list-style-type: none"> ●If optical port LOS light keep on, the optical signal from PON optical port is abnormal, please check: ●Whether connect the PON port in properly? ●Optical fiber connector type matches the optical interface? ●Whether the optical link loss is too higher, the input optical power is lower than the PON port receiving sensitivity?
PON LED Blinking	<p>If ONU/ONT registration fails:</p> <ul style="list-style-type: none"> ●Whether the input optical power value is exceed ONU/ONT's saturation optical power value. ●Whether the input optical power value is less than receiving sensitivity. ●Whether OLT works properly, or other ONU/ONT belong to same OLT PON port can register successful. If other ONU/ONT is in similar case, it may cause by the OLT. ●In EMS, if the ONU/ONT is in the OLT block list, then the ONU/ONT can't be registered. By default, all the connected ONU/ONT are not blocked which are able to register.
Packet loss	<ul style="list-style-type: none"> ●Check whether the optical connector is dirty or bend radius is too small. ●Check LAN port connection, and whether the work mode is matched. ●Check whether the device connect with ONU/ONT work normally.
LAN LED Off	<ul style="list-style-type: none"> ●Check whether the network cable is longer than 100M. ●Check whether the network cable is connected properly.
POE LED Off	<ul style="list-style-type: none"> ●Check whether the network cable is longer than 100M. ●Check whether the network cable is connected properly.

CONFORMITY TO EUROPEAN LAWS

Fracarro declares that the product complies with EU directive 2014/30/UE, 2014/35/UE and 2011/65/UE. The full text of the EU Declaration of Conformity is available on the following website ce.fracarro.com

USER'S INFORMATION

Disposal of Old Electrical & Electronic Equipment (applicable in the European Union and other European countries with separate collection system)



This symbol on the product or on its packaging indicates that this product shall not be treated as household waste. Instead it shall be handed over to the applicable collection point for the recycling of electrical and electronic equipment. By ensuring this product is disposed of correctly, you will help prevent potential negative consequences for the environment and human health, which could otherwise be caused by inappropriate waste handling of this product. The recycling of materials will help to conserve natural resources. For more detailed information about recycling of this product, please contact your local city office, your household waste disposal service or the shop where you purchased the product.

Garantito da / Guaranteed by / Garanti par

FRACARRO

Fracarro Radioindustrie SRL

Viale delle Querce n.9 - 31033 Castelfranco Veneto (TV) - ITALIA - Tel: +39 0423 7361 - Fax: +39 0423 736220.

Fracarro France S.A.S.

3 Boulevard de la Gare - 95210 Saint-Gratien - FRANCE Tel: +33 1 47283400

Fracarro (UK) - Ltd

Suite F9A, Whiteleaf Business Centre, Little Balmer, Buckingham, MK18 1TF UK - Tel: +44(0)1908 571571 Fax: +44(0)1908571570

www.fracarro.com - info@fracarro.com - supportotecnico@fracarro.com - chat whatsapp +39 335 7762667